

4-H NEWSLETTER

October 2023



326 8th St./Box 68
Hugo, CO 80821
P: (719) 743-2542
F: (719) 743-2555
Web:
lincoln.extension.colostate.edu
Facebook: [Lincoln County Colorado Extension](#)
Emily Baylie: Director, 4-H Youth Development/Agriculture
emily.baylie@colostate.edu
Christine Schinzel: 4-H Program Assistant
christine.schinzel@colostate.edu
Administrative Assistant
coopext_lincoln@mail.colostate.edu

National 4-H Week

~ October 1-7 ~



INSIDE

New Year 4-H Enrollment	2
4-H Club Information & Just to Get You Thinkin	3
Information & Events & Spring Weigh-In Survey	4-6
Safety StepUp: Hay Fire Prevention	7
Activity Page	8
Calendar	9
4-H's	10

The Extension Office/4-H are on Facebook @

[Lincoln County Colorado Extension](#)

*Visit the page for additional events and resources for all.

Lincoln County Extension/4-H
Website @

lincoln.extension.colostate.edu



4-H ENROLLMENT INFORMATION:

Enrollment Deadlines:

Early October-Enrollment
Opens

February 1

Enrollment closes for re-
turning members, new
members, foundation
members, & volunteers.

Project Deadlines:

**March 1 (Date Change)-
Project add/drop.

March 1-Hunter's safety
must be completed for all
members enrolled in
shooting sports that will
be participating in live fire
activities.

*Other- Livestock will
have to be tagged and/or
nominated to be eligible to
show at fair. Information
will be posted in the news-
letter for current year in-
formation.

Other Deadlines/ Project Requirements:

*Refer to the fair book for
project requirements to
show at the county fair.

*Download a record book
for completion require-
ments as well.

*Watch for information in
the newsletter, Facebook
page or web calendar.

Information Required for 4-H Enrollment Approval:

-Verify your eligibility for enrollment in Lincoln County. Requirements include one of the following: reside/own property in the county; attend school in the county; or live within 10 miles of the county line. To enroll members must be between the ages of 8-18 as of December 31.

-Enrollment must be completed in your 4H Online account.

*-Complete the health form. *If you do not have health insurance, please put (None). The health form is required for event/camp participation.*

-Complete the t-shirt size and other release forms.

-Complete emergency contacts (must be different from the parents/guardians).

-Update your mailing address, phone numbers, and preferred email.

**Email is the primary mode of communication from the office. The primary account listed in 4H Online is the one getting messages.*

*-Refer to the Colorado 4-H project page to verify you are enrolling in the correct project. *Hunter's Safety is required for all members participating in shooting sports that will be shooting in live fire activities.*

*-Remember to read each page carefully, select options, and electronically sign and date all sections in 4H Online before clicking to the next page. *You cannot return to a previous page.*

**Enrollments for members and volunteers cannot be approved until all required information has been completed. Please contact the office if you have any questions.*

Resources:

Lincoln County 4-H- lincoln.extension.colostate.edu/programs/4-h/

Colorado 4-H- co4h.colostate.edu/

Enrollment/Project Fees: -Enrollment fee- \$18/member (Pay fee to the club directly). **Other projects or activities may require additional fees or expenses. There are no fees for leaders or volunteers.

-Shooting Sports members- \$35/per enrolled shooting sports discipline. (This is in addition to the enrollment fee and is payable to the Extension office directly by January 31st).

Project Books/Manuals: Families will need to order project books/manuals directly from the supplier. Go to Colorado 4-H @ co4h.colostate.edu/program-areas/colorado-4-h-project-information/ and then click on "publication order form" to see where to download or order manuals.

4-H CLUB INFORMATION:

Heartland 4-H Club
 Club Information: Meets
 in Arriba
 Club Leader: Renae Saffer



Walk's Camp 4-H Club
 Club Information: Meets North
 of Limon
 Club Leader: Cheryl Thompson

Rocking 4-H Club
 Club Information: Meets in
 Limon
 Club Leader: Carla Stone

Kountry Kids 4-H Club
 Club Information: Meets in Hugo
 Club Leader: Barb Vaughn



Karval 4-H Club
 Club Information: Meets in Karval
 Club Leader: Janet Kravig

*The fall is time for members and volunteers to re-enroll in a 4-H club. If you are planning on changing clubs, please be sure to contact the new club leader to talk over individual club requirements and find out their individual meeting schedule to ensure it will be a good fit for your family.

JUST TO GET YOU THINKIN...

"I never lose. Either I win or learn."

-Nelson Mandela

"Life is short, but it is wide. This too shall pass."

-Rebecca Wells

INFORMATION & EVENTS

County: *Reminder to check your email and monitor our Facebook page for updates on 4-H activities and events. **Forms, fees, and registrations are due to the office by (day stated) or (previous Friday) if the day is a weekend or holiday. County related forms and applications are available on the 4-H Forms & Applications page at lincoln.extension.colostate.edu/4-h-forms-applications/. A reminder that forms can be mailed, emailed, faxed, or dropped through the back door slot. The extension office cannot take credit cards for payment purposes.*

-Lincoln County Extension/4-H Website @ lincoln.extension@colostate.edu

-Facebook @ [Lincoln County Colorado Extension](https://www.facebook.com/LincolnCountyColoradoExtension)

-Colorado 4-H Website @ co4h.colostate.edu & 4H Online @ v2.4honline.com/#/user/sign-in

- ◆ **National 4-H Week** is October 1-7! Celebrate by wearing your 4-H gear to school or work!
- ◆ **County 4-H Achievement Event & Ice Cream** will be Sunday, October 15 at 2:00pm at the Lincoln County Fairgrounds. Club Rotation-(Walks)-Arrive at 1:15pm to help set up and to assist with cleanup afterwards. Council members need to arrive at 1:15pm as well.
- ◆ **4-H (New Year) Enrollment** will be open in early October for new and returning 4-H members, and returning volunteers including foundation members. Enrollment will close February 1. **A reminder that members and clubs need to be enrolled and approved chartered clubs and members/volunteers before participating in new 4-H year activities.*
- ◆ **Livestock Sale Committee (Livestock Scholarship Program Beef)** applications are due November 1 for 4-H and FFA members. Goat, swine, and sheep applications are due February 1. For specific program information and applications go to "4-H Programs and Applications", and look under the "livestock sale" tab @ lincoln.extension.colostate.edu/4-h-forms-applications/.
- ◆ **South Central Dare to Be You Camp** is November 17-18 in Pueblo, CO. The activity based camp is for members 11-13. Camp Costs are \$65. Registration will close October 31 in 4H Online.
- ◆ **Hunter's Safety (Shooting Sports)**- Now is a good time to start looking for Hunter's Safety courses if you are interested in taking shooting sports as a project this next year. Hunter's Safety certification must be completed by the project add/drop deadline of March 1 for project continuation. Find classes @ cpw.state.co.us/learn/Pages/HunterEducation.aspx.
- ◆ **Shooting Sports Volunteers Opportunity**-We are seeking volunteers to become certified shooting sports instructors. Please contact christine.schinzl@colostate.edu to learn more about the volunteer training process and opportunities.
- ◆ **Spring Weigh-In/Tagging Survey-Feedback** is being sought on potentially having the spring weigh-in/tagging day brought back. Please see the QR in the newsletter to provide feedback.

INFORMATION & EVENTS (CONT.)

Other: *** *Verify with listed contacts pertaining to their individual event to find out specific information and guidelines, event cancellation procedures, registration requirements, etc.*

- ◆ **Additional Events-Facebook**– Many events/notices/resources in and out of 4-H are also posted on the [Lincoln County Colorado Extension](#) Facebook page as they become available. Be sure to check the page for additional opportunities and information for both youth and adults.
- ◆ **CSU Extension Live Smart Blog** (Family & Consumer) @ livesmartcolorado.colostate.edu/.
- ◆ **CSU Extension Horticulture Blog** @ cshort.blogspot.com/.
- ◆ **Lincoln County-Noxious Weed Management Pocket Guide** is available @ [Lincoln.extension.colostate.edu/programs/agriculture-natural-resources/](https://lincoln.extension.colostate.edu/programs/agriculture-natural-resources/).
- ◆ **Colorado Stock Horse Association Open Shows** are scheduled for several dates through the fall. More information available @ coloradostockhorse.com.
- ◆ **Various Livestock Shows** national listing flyers available @ showman.app/shows#/.
- ◆ **CSU Caregiver Workshop Webinar Series** is available monthly throughout 2023. Learn more and register @ colostate.az1.qualtrics.com/jfe/form/SV_cIx4pQdJNETewZM.
- ◆ **CSU College Connection Webinar Series** will take place with different colleges once a month this fall. Learn more about degrees, scholarships, and student organizations. Email csu_online_studentsupport@mail.colostate.edu for registration and schedule information.
- ◆ **Cloverleaf 4-H USA Shooting Coach Guest Speaker** on shooting Sports opportunities outside of 4-H is October 8 at 5:00pm at the Rocky Ford Extension Office. For questions contact Marlena Griesse-marlena.griesse@colostate.edu.
- ◆ **CSU Extension Ag Commodity Outlook + Strategies Workshop** will be October 11 in Rocky Ford and October 17 in Akron. Learn more and register @ eventbrite.com/e/2023-commodity-outlook-strategies-program-tickets-716173533317?aff=oddttdtcreator.
- ◆ **Colorado 4-H Shooting Sports Ambassador** applications are open till October 15th. Information is available @ co4h.colostate.edu/program-areas/shooting-sports/.
- ◆ **Daniels Scholarship** application is available until October 15th. Learn more @ danielsfund.org/scholarships/overview.
- ◆ **Purina Feed Greatness Scholarship Program** is open till October 17. Learn more @ learn-more.scholarsapply.org/purina/.

INFORMATION & EVENTS (CONT.)

- ◆ **National Dairy Herd Association Scholarship** is due October 31. Learn more @ dhia.org/scholarships/.
- ◆ **Denver Foundation Grants and Scholarship** opportunities available @ denverfoundation.org/scholarships/scholarship-opportunities/.
- ◆ **Colorado Farm Show Scholarships** are due November 1. Learn more @ coloradofarmshow.com/scholarships/.
- ◆ **Transova Internship** applications are due November 1. Scholarships open in January. Information and application @ transova.com/youth/.
- ◆ **Colorado Women in Agriculture Conference** is November 17-18 in Greeley, CO. Learn more @ weld.gov/Government/Departments/CSU-Extension/Colorado-Women-in-Ag.
- ◆ **Cheyenne Livestock Expo** is November 13-26 in Cheyenne, WY. Learn more @ cheyennelivestockexpo.com.
- ◆ **Fields-Of-Corn (National Corn Growers Association) Photo Contest** is accepting entries until November 30. Learn more and submit your photos @ fields-of-corn.com/.
- ◆ **Colorado Conservation Tillage Association Scholarship** is due December 1. Learn more @ highplainsnotill.com/scholarships/.
- ◆ **National Sorghum Foundation-BASF Joint Scholarship** application is due December 1. Information and application @ sorghumgrowers.com/foundation-scholarships/.
- ◆ **Colorado Food Summit** is December 7-8 in Denver, CO. Learn more @ foodsyste.ms.colostate.edu/events/food-summit-2023.
- ◆ **National Pork Producers Council Lois Britt Memorial Scholarship** is due December 31. Information and application @ nppc.org/get-involved/education-programs/.

SURVEY INPUT: SPRING WEIGH-IN

The Livestock Sale Committee and the Extension Office would like to gather input about interest for:

- Bringing back a Spring Weigh-In/Tagging for (Sheep, Swine, and Goats) as occurred in the past
- Mid-Summer Weigh Day opportunity
- Rate of Gain Contest as in the past for (Sheep, Swine, and Goat)

Please scan the QR code to complete the survey by November 1



SAFETY StepUP: HAY FIRE PREVENTION

Fall means that producers are finishing up the baling season with feed crops. Hay fires can happen when hay is dry through a variety of causes, but can also be caused by hay that was baled with too much moisture. If baling occurred with too high of a moisture level, then bacteria are more likely to divide and grow because of ideal conditions. *The bacteria commonly found in hay/forage crops (mesophilic) release heat because of respiration. When the bale reaches around 130-140°, bacteria then begin to die off. However in the process, bale temperatures may become extreme and fires often occur at temperatures over 170° according to *Ag Safety & Health*. Additional heat can also be generated by stacking bales without proper air flow or too much bale density in the stacks.

Fire Prevention & Response Strategies:

- ◆ Bale hay at moisture levels of 20% or less depending on bale size. Consider utilizing hay preservatives or specialized drying equipment as appropriate.
- ◆ Utilize a temperature probe (see resources for techniques) to check on stacks until ideal temperatures are reached. Be aware of different conditions (weather, baling dates, moisture, location to structures, etc.) when considering how long to monitor hay stacks.
- ◆ Keep your stacks separated to prevent fire outbreaks and increase ventilation around the stacks to ensure drying. Stack hay on gravel or pallets to reduce moisture. Also avoid stacking hay too high or deep.
- ◆ Mow around stacks and remove all sources of combustion (junk, fuel, equipment, etc.). Stack hay away from repair areas where sparks are likely. In dry years, be especially vigilant for fire outbreaks due to weather or other causes such as vehicle sparks. Work with your neighbors to encourage drive-by spot checks on fields with stacked hay for each other.
- ◆ Engage your local fire department to talk about fire mitigation strategies including what preservatives or other hazards may be a factor on your operation. Implement a fire safety response plan and ensure adequate water resources are available.
- ◆ If a fire occurs, call 9-1-1 and make sure to keep the scene safe. Turn off all electrical and gas sources nearby and help first responders by moving hay as directed. Be aware when fighting hay fires that spontaneous combustion, collapse of piles (causing entrapment), re-ignition, and/or toxic gases may be produced (especially if a preservative was used).

Resources:

-Ag Safety & Health->Preventing Fires in Baled Hay and Straw @ extension.org/pages/66577/preventing-fires-in-baled-hay-and-straw

-Safety Data Sheets General Database @ chemicalsafety.com/sds-search/ or contact the product manufacturer directly as well



ACTIVITY PAGE:

Monthly Reader

*"Construction Site:
Farming Strong, All Year
Long"*

By Sherri Duskey Rinker

1) _____
2 15 1 20

2) _____
12 21 18 5

3) _____
14 5 20

4) _____
12 9 6 5 10 1 3 11 5 20

5) _____
16 12 9 5 18 19

6) _____
19 21 14 19 3 18 5 5 14

7) _____
2 21 7 19 18 1 25

8) _____
8 1 20

9) _____
19 8 15 5 19

10) _____
6 9 19 8 9 14 7 16 15 12 5

11) _____
12 9 14 5

12) _____
2 15 2 2 5 18

13) _____
6 9 19 8 9 14 7

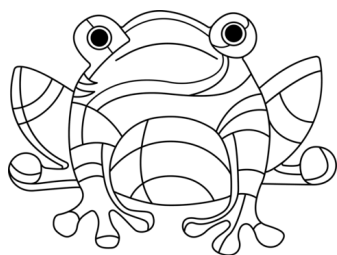
12 9 3 5 14 19 5

Key Code:

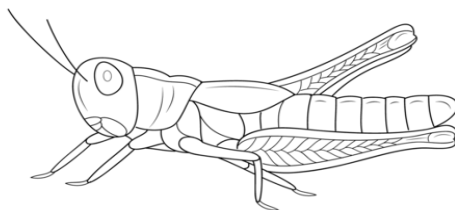
A=1	N=14
B=2	O=15
C=3	P=16
D=4	Q=17
E=5	R=18
F=6	S=19
G=7	T=20
H=8	U=21
I=9	V=22
J=10	W=23
K=11	X=24
L=12	Y=25
M=13	Z=26

Do you know this animal?

A) _____

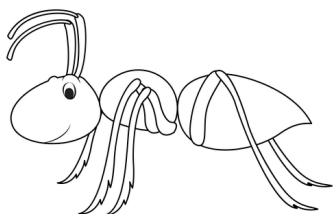


B) _____



D) _____

C) _____



Supercoloringpages.com

October 2023

Sun	Mon	Tue	Wed	Thu	Fri	Sat
1	2	3	4	5	6	7
National 4-H Week is October 1-7!						
8	9 Office Closed- Holiday	10	11	12	13	14
4-H Enrollment Re-Opens Early October						
15 4-H Achieve- ment Event & Ice Cream 2:00pm @ Fairgrounds	16	17	18	19	20	21
22	23	24	25	26	27	28
29	30	31 Registra- tion close D2BY Camp	November 1 -Livestock Sale Committee Beef Scholar- ships Applica- tions Due -Weigh-In Sur- vey Closes			

HEAD-> Colorado Food Summit

The Colorado Food Summit is a great opportunity to learn from different stakeholders (producers, manufacturing, retail, commercial production, restaurants, education, and more) about what is currently happening with food and agricultural systems in Colorado. It also helps build collaboration, research, education, and problem solving platforms for very complex issues. It allows everyone a chance to connect and further build capacity.

You can learn more about the event on December 7-8 in Denver or register @ foodsyste.ms.colostate.edu/events/food-summit-2023.

HEART-> Support Your Local School Event

School is back in session and students are actively engaged with many extracurricular school activities. This is great time of year to check out some of those events. Attending these events allows you to support your friends and other students who may not have a strong support system. You can also learn more about a particular activity such as Marching Band or golf. Find Events @

Karval @ karvalschool.org/

Limon @ limonbadgers.com/

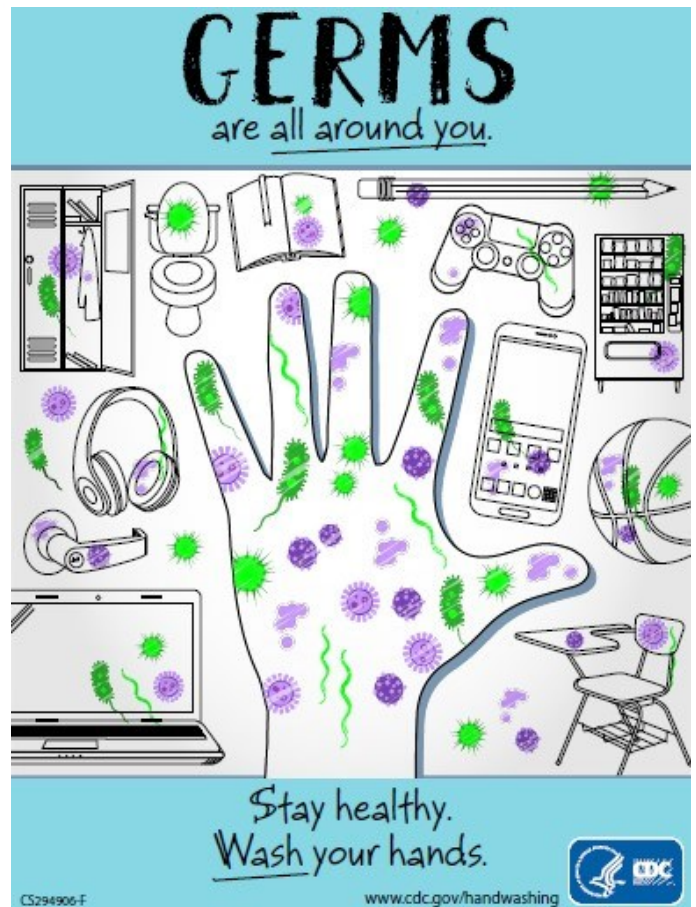
Genoa-Hugo @ genoahugo.org/

Arriba-Flagler @ af20.net/

HANDS-> Shooting Sports Ambassadors

The Colorado 4-H Shooting Sports program serves youth and volunteers in a variety of ways throughout the year. One component is the opportunity for older 4-H youth to become Shooting Sports Ambassadors. Ambassadors assist with trainings, help with camps and other activities, assist with state shoot, and engage with the general public, state instructors and volunteers, and supporters at other hosted events. This is a great leadership opportunity for shooting sports youth to learn more about how the program works and grow many life skills. Applications are open till October 15 @ co4h.colostate.edu/program-areas/shooting-sports/.

HEALTH-> Hand Wash Reminder



Colorado State University is an equal access and equal opportunity University. <https://col.st/110t3>.

Any mention of company names and/or products doesn't imply an endorsement of those entities or their services nor does it imply a criticism of their competitors and products. Items mentioned are strictly for educational or informational purposes.