

4-H NEWSLETTER

June 2020



326 8th St., PO Box 68
Hugo, CO 80821
Phone: (719) 743-2542
Fax: (719) 743-2555
Website:
lincoln.extension.colostate.edu
Facebook: [Lincoln County Colorado Extension](#)
Robin Halley-Director, 4-H Youth Development/ Agriculture Agent
robin.halley@colostate.edu
Christine Schinzel-
4-H Program Assistant
christine.schinzel@colostate.edu
Amy Solomon-
Extension Program Assistant
coopext_lincoln@mail.colostate.edu

INSIDE:

Animal Information Corner: Reportable Diseases	2
Family & Consumer: COVID Resources	3
Information & Events	4-5
Family & Consumer: Ticks	6
Activity Page	7
Calendar	8
Portable Scale & Just To Get You Thinkin..	9
4-H's	10

Check out the Lincoln County Extension/4-H Facebook Page at:
[Lincoln County Colorado Extension](#)
Website:
lincoln.extension.colostate.edu/

Check out the Colorado State University Extension Facebook Page at:
[CSU Extension](#)
Website:
extension.colostate.edu/

Check out the Colorado 4-H Facebook Page at:
[Colorado 4-H](#)
Website:
co4h.colostate.edu/

ANIMAL INFORMATION CORNER: REPORTABLE DISEASES

Reportable Diseases can be applied both to humans and animals. They are diseases that individual states, the federal government, and/or foreign governments determine pose a high threat. There are many factors to consider that may contribute to diseases requiring reporting including but not limited to: rapid spread; poor or no treatment options; high morbidity; cause severe economic loss due to production declines; high transmission or carrier to other species including humans; foreign disease introduction; and more. A reportable disease is one that must be “reported” to the state veterinarian’s office. If you suspect you have an animal with a reportable disease contact your local veterinarian and/or the state veterinarians office. The Colorado Department of Agriculture provides information about what should be reported, when to report, and how. It’s also important to have a good relationship with your local veterinarian to implement a herd health plan; implement biosecurity measures; and keep them in the loop when you have individual or herd issues that may be related to a reportable disease. As many diseases display common symptoms an accurate diagnosis is important. *Currently in 2020 Colorado has confirmed cases of Rabies and Rabbit Hemorrhagic. They are also watching border states with confirmed cases of Vesicular Stomatitis.

The Colorado Department of Agriculture provides a listing of information on their website relating to each listed reportable disease including:

- What the disease is
- How it is transmitted
- Symptoms and treatments (if any)
- What species are affected
- Biosecurity and guidelines tips for individuals and events
- Prevention
- The who and how of reporting the disease
- Current confirmed cases in the state and information from neighboring states or the USDA

Colorado Department of Agriculture-News, Livestock Movement, Disease Reporting, current reportable disease cases in the state & More: colorado.gov/pacific/aganimals

United States Department of Agriculture-APHIS Animal Diseases: aphis.usda.gov/aphis/ourfocus/animalhealth/animal-disease-information

World Organization for Animal Health: oie.int/animal-health-in-the-world/oie-listed-diseases-2018/

FAMILY & CONSUMER: COVID 19 RESOURCES

The following are resources to help find information on the virus relating to state and federal, as well as information about economic stimulus information for individuals and businesses, payment help, mental health and wellness, food resources, agricultural producer information, and more.

Colorado Resources-COVID-19: covid19.colorado.gov/

Colorado Department of Agriculture: colorado.gov/agmain

Colorado Food Assistance: hungerfreecolorado.org/covid-19/

Colorado Department of Labor & Employment: colorado.gov/pacific/cdle/information-and-resources-coronavirus

Center for Disease Control: cdc.gov/

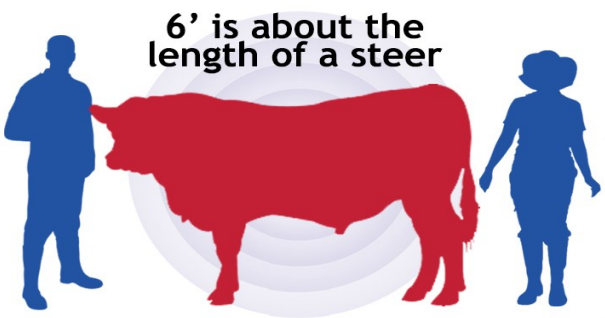
Internal Revenue Service: irs.gov/coronavirus


Small Business Administration: sba.gov/

Six Feet Away

COVID-19 AND MINIMIZING RISK

6' is about the length of a steer







COVID-19 is primarily spread through respiratory droplets produced when an infected person coughs or sneezes.

6'

People who have sustained contact within 6 feet of an infected individual are most at risk of transmission.




See Something,
Say Something.



safe2tell
Colorado

1-877-542-7233
safe2tellico.org



Available on the App Store ANDROID APP ON PLAY STORE


ANONYMOUSLY REPORT CONCERNS 24/7

TAKE A CHECKUP FROM THE NECK UP



FREE. PRIVATE. ANONYMOUS.
MHASCREENING.ORG

The agricultural economic crisis is real.
The resulting stress is real. Let's TALK about it.



COLORADO
CRISIS SERVICES

844-493-TALK (8255)
OR TEXT TALK TO 38255

NATIONAL

SUI**C**IDE

PREVENTION

LIFELINE

1-800-273-TALK (8255)

suicidepreventionlifeline.org

INFORMATION & EVENTS

County: *^Most activities will continue virtually at this time. Please continue to check your email and monitor our Facebook page for updates on 4-H activities and events. Information is given as known at time of distribution. Lincoln County offices are fully back open June 1.*

***Forms, Fees, and registrations are due to office by (day stated) or (previous Friday) if day is a weekend or holiday. County related forms and applications are available on the 4-H Forms & Applications page at lincoln.extension.colostate.edu/4-h-forms-applications/. A reminder that forms can be mailed, emailed, or faxed to the office, as well as dropped through the back door slot.*

- ◆ **Shooting Sports Practice** Scored Shoot Practice 1 is June 5 for all disciplines (rifle @ 7:30, shotgun @ 8:30, and archery @ 10:45am). All shoots are at the Limon Gun Range. Scored Shoot 2 is July 10 for all disciplines at the range. Shoot members please refer to your emails for more specific information regarding the shoot dates and COVID-19 guidelines for shoots.
- ◆ **Hoof Trimming Day (Beef/Dairy Cattle)** is July 2 at Eastern Colorado Veterinary Services in Limon. Cost is \$30/head (bring cash day of event). Register by June 25 to the Extension office 719-743-2542 ext.13 or christine.schinzel@colostate.edu.
- ◆ **Horse Ranch Classes**– All members interested in taking ranch classes will need to pass the Level 1 and Level 2 Ranch Horse written and riding tests before exhibiting in those classes. Contact the office for more information. Levels testing study guides are available at: co4h.colostate.edu/program-areas/horse-resources/levels-testing/.
- ◆ **County Council– Peaches Fundraiser**– A reminder that council will not sell any peaches this year due to the producer’s crop being destroyed by freezing weather.
- ◆ **County 4-H Award Nominations** are due September 1 to the office. Take time to nominate someone for one of the awards: Outstanding 4-H’er, Outstanding Volunteer, Partner in Success, Hall of Fame and Gwendal Leonard Hard Luck award. Nomination forms are available under “awards” at lincoln.extension.colostate.edu/4-h-forms-applications/.
- ◆ **Lincoln County Fair & Project Resources:**

Fair Schedule, entry requirements, and information will be available after July 1. The fairbook is online currently so that members may access project guideline requirements to complete general projects and learn about general requirements. Please continue to frequently check your emails for fair information requirements and updates as this year will be different from past years.

- ◆ Horse, Cat, and Dog ID’s county deadline is July 1st. A horse may be ID’d/shared as a project horse by no more than 2 unrelated 4-H Members. Immediate family members may share and ID the same project horse.
- ◆ Fair Theme: “Here We Go Again”
- ◆ Display boards, clothing tags, and record book covers are available from the office for \$3/each.

INFORMATION & EVENTS

*Lincoln County Fair Book online at: lincoln.extension.colostate.edu/lincoln-county-fair/.

*Colorado 4-H project information and general project record book resources: co4h.colostate.edu/program-areas/

*Lincoln County Livestock/ Animal Record Books: lincoln.extension.colostate.edu/4-h-projects-record-books/

*Colorado State Fair 4-H Information: co4h.colostate.edu/program-areas/projects/

Other

****Verify with listed contacts pertaining to their individual event to find out specific information and guidelines, event cancellations procedures, registration requirements, etc.*

- ♦ **4-H Virtual Horse Camp** is June 8-12 for all 4-H members. Registration closes June 6 @ docs.google.com/document/d/1mhn_UQlztIyTVKZ0KbF-rSp2nsgXrXOUyDOIWixBHpM/edit?usp=sharing. For questions contact Beth Hayes at 719-251-0245 or hayesb@pueblocounty.us.
- ♦ **Colorado Junior Swine Association** summer shows and information is available at cjsaswine.com/. Check their site for shows and updates.
- ♦ **National Association Farm Broadcasters (NAFB) Scholarship** is due June 10. Information and application is available at nafb.com/foundation/scholarship-program.
- ♦ **Virtual Goat Drenching Education Workshop** from Bent County is June 11. Registration is available at zoom.us/meeting/register/tj0sfuGvpjgqHNdksLdvGr8vIDvB5Z1PR3K3.
- ♦ **CSU Preserve@Home Online Food Preservation Training** is a six week class in June and July. Register by June 13 at eventbrite.com/e/preservehome-online-junejuly-2020-registration-104545386064?fbclid=IwAR3F8gg0QkgOi7h4yLynyPcyid_T-q1RQ9pmxexK4DFji0Cz23emdvLNw10. Cost is \$40 for the class and open to all.
- ♦ **American Jersey Cattle Association Scholarship** applications are due July 1. Information is available at usjersey.com/AJCA-NAJ-JMS/AJCA/YouthPrograms/YouthScholarshipsandEducationalPrograms.aspx.
- ♦ **Briggsdale Classic Open Jackpot Show** is July 10-12 in Briggsdale, CO. For information follow the Briggsdale Classic Livestock Show Facebook page or briggsdaleclassic.wordpress.com/.
- ♦ **Colorado Simmental Youth Grants & Scholarships** applications are due October 1. Information is available at coloradosimmental.com.

Event Roundup:

4/25 Virtual Livestock Judging Contest Senior Sheep & Goat- 8th Brylie Thompson

5/9 Virtual Livestock Judging Contest Senior Team- 11th – Skylar Vice, Starr Borders, Lilliana Bor-

FAMILY & CONSUMER: TICKS

Resources:

Ticks-[cdc.gov/ticks/index.html](https://www.cdc.gov/ticks/index.html)

Colorado Ticks and Tick-Borne Diseases 5.593- extension.colostate.edu/topics/areas/insects/colorado-ticks-and-tick-borne-diseases-5-593/

Tick Bite- [cdc.gov/ticks/pdfs/FS_TickBite.pdf](https://www.cdc.gov/ticks/pdfs/FS_TickBite.pdf)

Tick Species Identification & Habitat Locations- https://www.cdc.gov/ticks/geographic_distribution.html

Prevention- [cdc.gov/lyme/prev/index.html](https://www.cdc.gov/lyme/prev/index.html)

Lyme Disease- [cdc.gov/lyme/](https://www.cdc.gov/lyme/)

Youth Activities-Ticks: [cdc.gov/lyme/resources/toolkit/Final_LymeDiseaseCrossword_apr2010.pdf](https://www.cdc.gov/lyme/resources/toolkit/Final_LymeDiseaseCrossword_apr2010.pdf)

As you venture out into areas with tall grass, shrubs, and/or lots of trees it's important to be on the lookout for ticks. Late spring, early summer, and mid-fall is when ticks are most active. In Colorado there are around 27 species of ticks present including the Rocky Mountain Wood tick, the American Dog tick, and the Brown Dog tick. Ticks transmit a variety of diseases including Tick Fever, Rocky Mountain Spotted Fever, Tularemia, and Lyme disease. Ticks climb onto vegetation and attach themselves to mammals to feed off the animals blood supply to sustain them nutritionally.

Before You Go Out:

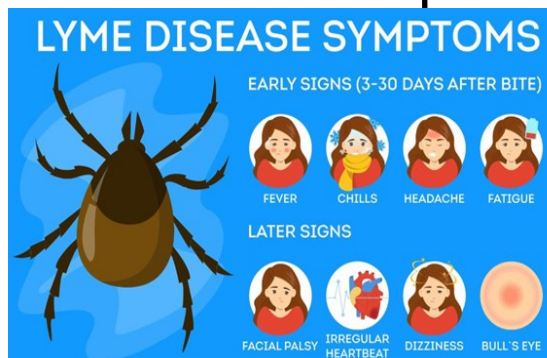
- Treat clothing and gear with permethrin per instructions and allow to dry before going out.
- Spray on registered insect repellent before going out.
- Make sure pets have been treated with a preventive product.

End of Day Tick Check:

- Examine gear and pets for ticks.
- Take clothes off and run through the dryer after coming indoors.
- Thoroughly check all body parts including the head and take a shower.

Around the Home Tick Reduction:

- Keep grasses mowed; bushes trimmed; and place a 3ft. barrier of gravel or wood chips between the wooded areas and the yard.
- Remove debris piles frequently and keep wood piles dry and away from the home.



Informational Image provided by AgriSafe

Tick removal guidelines from the CDC:

- Pull the tick straight up and out using tweezers and then clean the bite area.
- Take a picture of the tick for identification before disposal.
- Contact your doctor if you experience illness symptoms within 30 days and show them the photo.

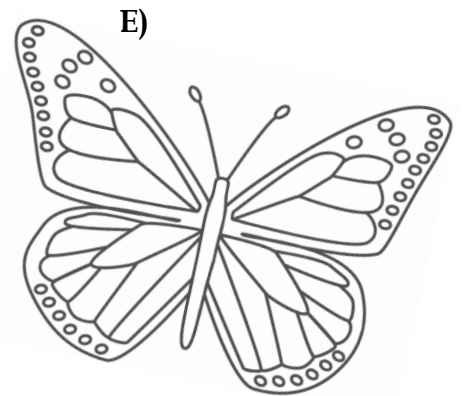
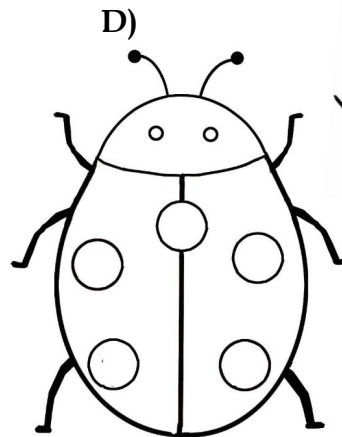
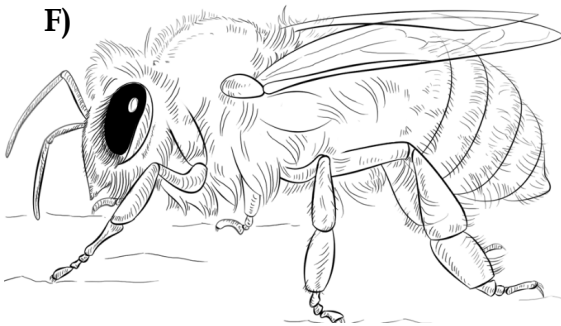
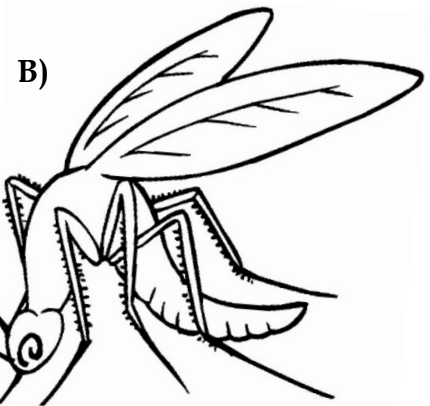
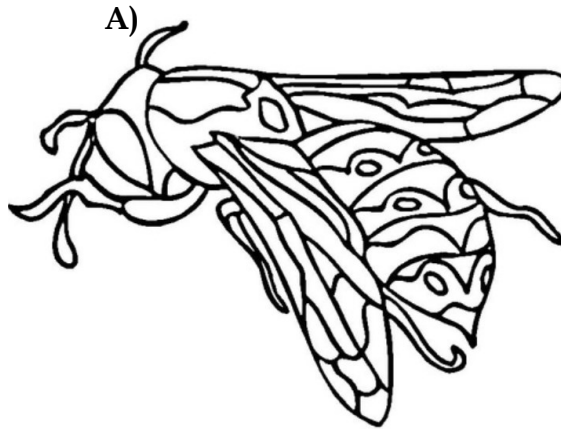
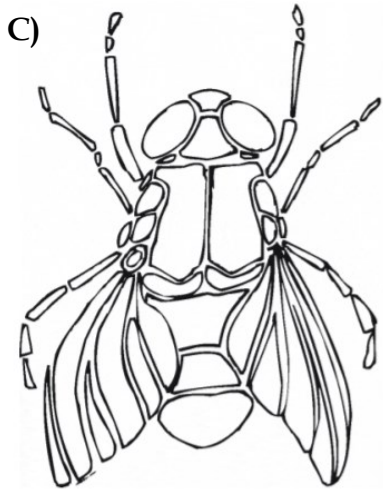
ACTIVITY PAGE:

Color and Identify Common Summer Insects:

Monthly Reader:

**Full of Beans: Henry
Ford Grows a Car**

-By Peggy Thomas



Create a Butterfly Puddle- kids.gardening.org

*This is a great activity to attract butterflies and provide nutrients to them.

Materials: Shallow container (i.e. end of plastic container or flower pot tray); Sand; Soil; Manure Compost; and Salt

Instructions: Fill the container with a mixture of primarily sand, some soil, and composted manure or a teaspoon of salt. Make a small indent in the middle of your mixture in the container and add water. Place the container in a garden or vegetative area and watch for butterflies. Refill the container with water as necessary and occasionally change out the mixture over the summer.

To learn more about insects and bugs in Colorado go to CSU's Department of Agricultural Biology: agbio.agsci.colostate.edu/outreach-button/insect-information/.

June 2020

Events and Information available at lincoln.extension.colostate.edu/events/

Sun	Mon	Tue	Wed	Thu	Fri	Sat
	1	2	3	4	5 Shoot Sport @ (7:30 rifle) (8:30 shot-gun) & 10:45 (archery)	6
7	8	9	10	11	12	13
14 Fathers Day	15	16	17	18	19	20
21	22 Virtual State 4-H Conference	23 Virtual State 4-H Conference	24 Virtual State 4-H Conference	25 Virtual State 4-H Conference	26 Virtual State 4-H Conference	27
28	29	30	July 1 Horse, Cat, Dog Id's Due	July 2 Hoof Trim Day @ Eastern Colorado Veterinary Services	July 3 Office Closed Holiday	July 4

PORTABLE SCALE AVAILABLE FOR USE:

There is a portable (sheep, goat, and swine) scale available for use at the Extension Office. The scale is available for use/pickup by appointment only. We encourage you to bring a trailer to load it into.

*A \$50 deposit is required and an equipment check-out sheet must be completed.

*The scale must be disinfected according to the "Disinfectant Protocol Sheet" before it is returned to the office.

*A \$50 late fee will apply if the scale is not returned on time.

*Non 4-H/FFA members may also rent the scale for \$25/ per day.



JUST TO GET YOU THINKIN...

"To think too long about doing a thing often becomes its undoing."

-Eva Young

"You cannot make yourself feel something you do not feel, but you can make yourself do right in spite of your feelings."

-Pearl S. Buck

Head-> Colorado Foundation for Ag.

Colorado Agriculture in the Classroom as part of the Colorado Foundation for Agriculture provides valuable resources about agriculture to classrooms in the form of readers, activities, and the Ag Literacy Program. They also provide fun learning activities and help youth learn about Colorado agriculture in particular. Adults can also find great information, sign up to be a reading volunteer, or learn how to donate.

To access resources, learn more, and/or donate go to growingyourfuture.com/.



Hands-> Judging Resources-Livestock

The internet provides some distinct advantages to youth today. Access to resources and media including videos is better than ever. One such resource is LivestockJudging.com. Their site provides options for individuals and teams to obtain resources related to animal and meats judging for horse, cattle, poultry, swine, sheep, and goats. There are videos, terminology, set classes, contest options, the ability to set up classes for others and so much more. For an added resource for those interested in judging- check out their site to learn more:

livestockjudging.com/

Heart-> Music Equipment

School is out of session for the year, but now is a great time to start thinking about the fall and how you can help those in your local music program. Participation in the music program is a great opportunity for students to learn a life-long hobby and help with coordination, memory, craftsmanship, and other skills. Musical equipment is needed for students to participate and many programs do not have adequate funding to provide instruments for all students. Many families can also not afford to purchase the equipment on their own. You can help contribute by donating your old musical equipment to your local department or providing monetary funds for students to purchase equipment.

Health-> FoodKeeper

The *FoodKeeper* is a tool with a webpage and a portable App to provide consumers with easy to use information on food and beverage storage regarding quality and freshness. Proper storage helps you keep food longer and reduce food-borne illness.

There is a browse function for different categories and types or a search function as well. The categories include: beverages; frozen food; dry/shelf food; refrigerated; and more. For many options it shows the length of storage for opened or refrigerated vs. frozen.

To learn more or download the mobile App links go to: foodsafety.gov/keep-food-safe/
foodkeeper-app

Colorado State University, U.S. Department of Agriculture and Lincoln County cooperating.

Extension programs are available to all without discrimination.

Any mention of company names and/or products doesn't imply an endorsement of those entities or their services nor does it imply a criticism of their competitors and products. Items mentioned are strictly for educational purposes.